



LANDFILLS IN THE AUCKLAND REGION

ROSEDALE RD LANDFILL NORTH SHORE

Owned and operated by:
Northern Disposal Systems Ltd

Date opened: 1978

Area covered: 38ha

Area serviced:
Greater Auckland

Type of waste accepted:
Domestic and commercial refuse.
No hazardous waste.

Life Expectancy: Depends on volumes. If refuse declines, the landfill could last up to 2000, possibly beyond.

Proposed land use after closure:
Recreation park or playground.

Not open to the public. Waste goes through the Constellation Drive Transfer Station or Devonport Transfer Station.

GREENMOUNT LANDFILL EAST TAMAKI

Owned and operated by:
Northern Disposal Systems Ltd

Date opened: 1980

Area covered: 54ha

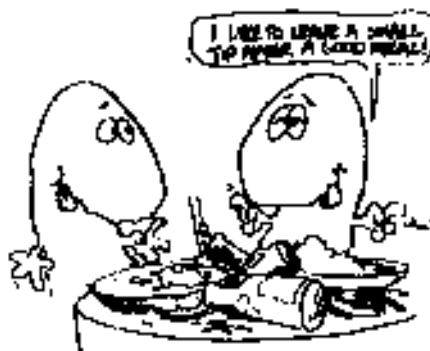
Area serviced:
Northland to Taupo

Type of waste accepted:
Domestic and commercial refuse.
Co-disposal site. Can accept selected hazardous waste.

Life expectancy: 2003

Proposed land use after closure:
Golf course.

Not open to the public. Waste goes through Pikes Point Transfer Station.



REDDALE LANDFILL DAIRY FLAT

Owned and operated by:
Waste Management (NZ) Ltd

Date opened: August 1993

Area covered: 84.9124 ha
Type of waste accepted: non-hazardous residential, commercial and industrial solid waste, demolition debris, and sludges with solids contents greater than 20%.

Life expectancy: 30 years
Proposed land use after closure: passive recreation. Suggested uses are bridle trails, fitness and jogging trails and cycling tracks.

Not open to the public.

WHITFORD LANDFILL MANUKAU

Owned and operated jointly by:
Manukau City Council and Waste Care Ltd.

Date opened: Has been open since 1970 as a landfill but was used before this for local rubbish disposal. In December 1993 a new contract was signed between Manukau City Council and Waste Care Ltd. The new company operates under Waste Disposal Services Ltd.

Area covered: Landfill footprint area approximately 22ha.
Total landfill property approx. 89ha.

Area serviced: 55,200ha. All areas that fall under Manukau City plus Franklin, Papakura.

Waste accepted: Domestic, industrial and commercial waste of a non-hazardous nature.

Life expectancy: 30 years from 1993.

Proposed land use after closure: Not finalised, but will be for public recreational purposes such as parks, equestrian or golf.

Hours: Mon - Fri 7:30am - 4:30am
Sat 7.30am - 2.00pm

Not open to the public
Commercial Vehicles Only
Waste goes through East Tamaki Transfer Station. Enquiries to Waste Disposal Services Ltd.

Phone: 525 0831



WELLSFORD AND LAWRIES RD
TRANSFER STATIONS
(RODNEY) ↑

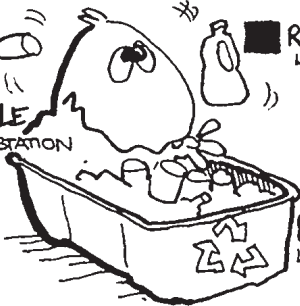
TRASH MAP



SILVERDALE
TRANSFER STATION

REDALE
LANDFILL*

HELENSVILLE
TRANSFER STATION



ROSEDALE
LANDFILL*

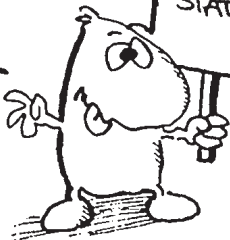
CONSTELLATION DRIVE
TRANSFER STATION



DEVONPORT
TRANSFER STATION

WAITAKERE CITY

TRANSFER
STATION



GREENMOUNT
LANDFILL*

PIKES POINT
TRANSFER STATION

WHITFORD
TRANSFER STATION
AND LANDFILL

EAST TAMAKI
TRANSFER STATION



PAPAKURA
TRANSFER
STATION

HUNUA GORGE
LANDFILL*

PUKEKOHE
TRANSFER STATION

* LANDFILLS NOT OPEN TO PUBLIC

WAIUKU
TRANSFER STATION

KAY ROAD BALEFILL SWANSON

Operated by:
Waitakere City Council

Date opened: November 1985

Area covered: 11ha

Type of waste accepted:
Pre-baled municipal waste only;
domestic, commercial and industrial
waste of a non-hazardous nature.

Life expectancy: November 1996.

Proposed land use after closure:
A tree planting programme over a
number of years, for passive recreation
eg. nature trails.

Not open to the public.
Waste goes through the Baling Station,
The Concourse, Waitakere City.

LAWRIES ROAD LANDFILL RODNEY

Owned and operated by:
Rodney District Council

Date opened: 1979

Area covered: Total area available 8ha.

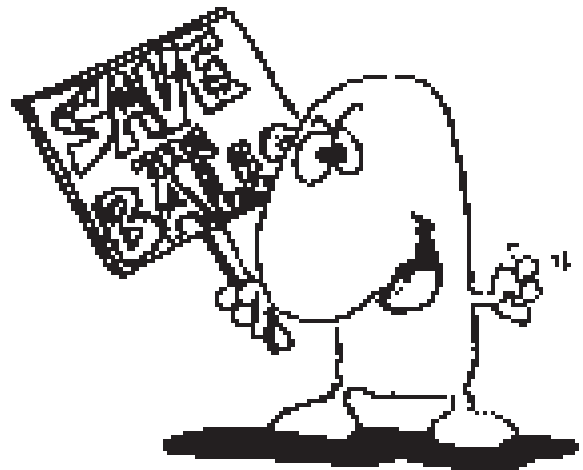
Area being used at present: 2ha.

Type of waste accepted:
General municipal waste of a non-
hazardous nature.

Life expectancy: 20 years.

Proposed land use after closure:
Grassed and possibly used for grazing.

Hours: 12:30pm - 4:30pm daily.



For further information
Regional Waste
Private Bag 92 012
Auckland

ARC Wasteline (09) 366-2070
July 1998