

Transport rating policy

July 2009

In 2004 the Auckland Regional Council adopted a new way of spreading its transport rate across the region. The ARC transport rating policy follows the principle that those ratepayers with access to better public transport services should contribute more than those who have fewer services in their local area.

The ARC's transport rate requirement of \$86.62 million is split 80/20, with 20 per cent spread across the whole region and collected as part of the general rate which all ratepayers pay. The remaining 80 per cent is divided amongst ratepayers living in targeted transport rateable areas [see areas map on page 3].

Why did we adopt this transport rating policy?

The ARC consulted extensively with the community in 2003 and 2004 on how to spread its transport rate. We asked "Which ratepayers in the region should pay transport rates, and in what proportion?"

We held community open days and workshops with stakeholders. A survey called "Get Involved" made it easier for people to provide feedback and to increase the public's input into the draft plan.

We received 4,800 responses, formal submissions and letters and emails from individuals and groups, and we surveyed a further 480 people. After considering all the responses, the council developed a model for spreading the transport rate, basing the proportion that ratepayers pay, on the level of public transport services in their area.

The targeted transport rateable areas are based on the level of public transport service in each area:

Inner Urban - better access to public transport services – differential of 1.25 applies (ratepayers in this area pay a 25 per cent more than the Metropolitan rate for a property of the same value)

- **Metropolitan Area A** – Provides reasonable access to public transport services – differential of 1.0 applies
- **Metropolitan Area B** - Last year the council determined that the boundary of the Metropolitan Area A should be extended in Flat Bush and East Tamaki to reflect increased access to public transport in this area. Transport rates for these properties are in their second year of being phased in. This year these properties will be classed as Metropolitan Area B and will pay two thirds of the Metropolitan Area A rate. From 2010/11 they will pay the full Metropolitan Area A rate.
- **Metropolitan Area C** - Last year the council determined that the boundary of the Metropolitan Area A should be extended in Hingaia Peninsula and Takanini East. Transport rates for these properties will be phased in over three years. In 2009/10 these properties will be classed as Metropolitan Area C and will pay one third of the Metropolitan Area A rate. In 2010/11 these properties will be classed as Metropolitan Area B and will pay two thirds of the Metropolitan Area A rate. From 2011/12 they will pay the full Metropolitan Area A rate.
- **Settlement Area A** - Lower levels of access to public transport services – differential of 0.5 applies (ratepayers in this area pay half as much as ratepayers in the Metropolitan Area for a property of the same value).
- **Settlement Area B** – Last year the Council determined that the boundary of the Settlement Area A should be extended in Pukekohe to reflect increased access to public transport in this area. Transport rates for these properties are in their second year of being phased in. This year these properties will be classed as Settlement Area B and will pay two thirds of the Settlement Area A rate. From 2010/11 they will pay the full Settlement Area A rate.
- **Settlement Area C** - the Council is continuing to set the level of transport rates for Waiheke, Waiuku and Riverhead at one third of the Settlement Area A rate. Rural properties and properties outside these areas pay nothing towards a targeted transport rate.

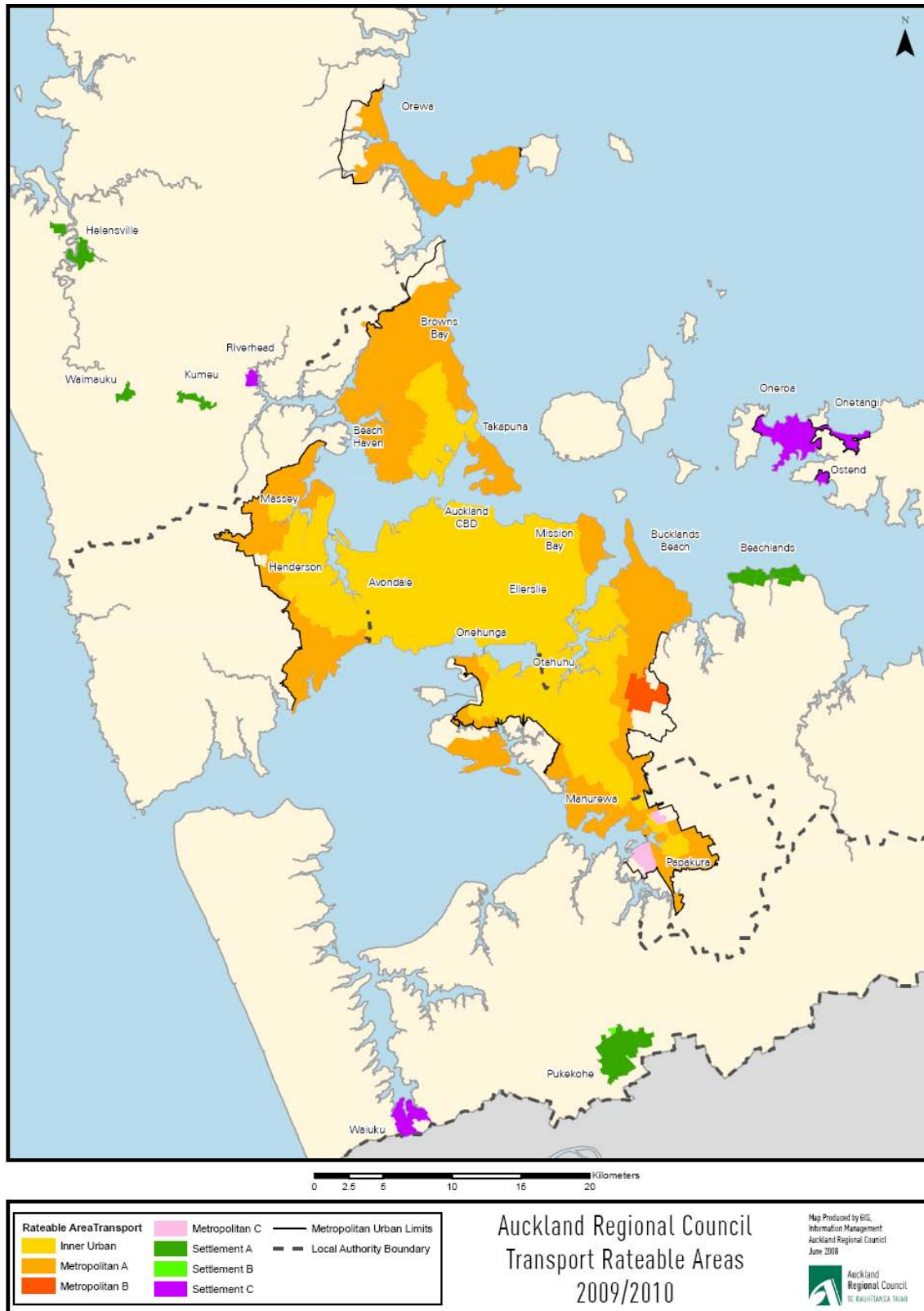
What happens as more public transport services become available in certain areas?

Every three years the boundaries of all of the targeted transport rateable areas are reassessed and changed to accommodate any changes in public transport service levels in those areas. Transport rating boundaries were reviewed in 2007/08 and the

resulting changes are found above and are available in ARC's Long Term Council Community Plan 2009-19. The boundaries will be next reviewed in 2010/11.

What area is my property in?

Detailed maps which show what transport area your property is in are available from our website www.arc.govt.nz or you can call our call centre on 09 366 2000, option 3.



Contact Us

If you would like to know more you can email rates@arc.govt.nz, or you can contact the Rates Contact Centre on (09) 366 2000. Call 0800 80 60 40 if you are outside the Auckland free-call area. Press 3 from the options menu.