



file: HO32-09

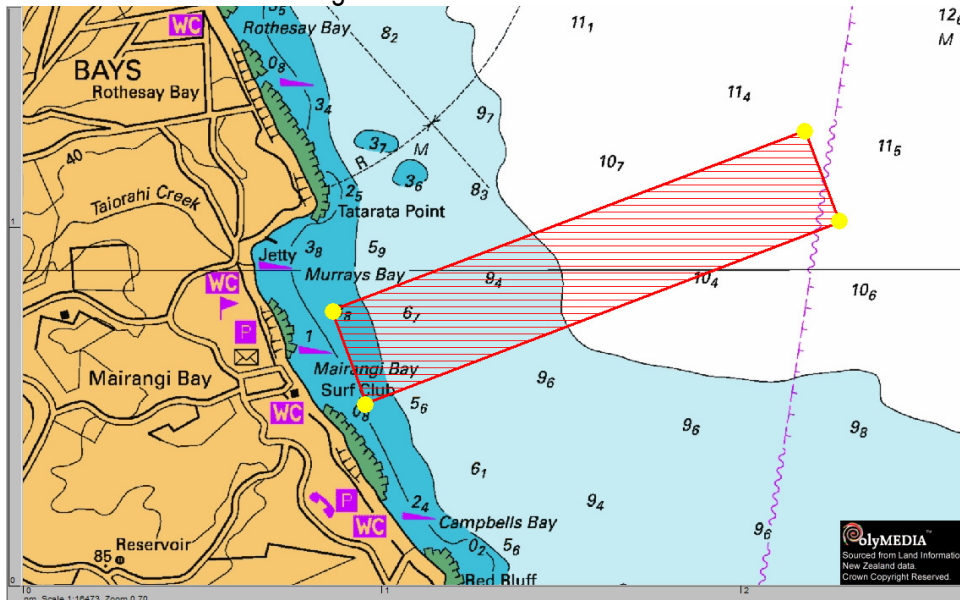
Notice to Mariners: 20-09

Mairangi Bay, Rosedale Outfall Dredging Operations, Hauraki Gulf

Marine operations (dredging, drilling and pipe laying) will continue off Mairangi Bay until 30th September 2009. This operation will involve vessels engaged in underwater operations and restricted in their ability to manoeuvre. Patrol vessels McDowell 1 and McDowell 2 will be standing by and listening on VHF Ch 12 & 16.

The GPS positions (WGS 84) of the project area are as follows;

- Lat 36 44.120S Long 174 45.524E
- Lat 36 44.378S Long 174 45.642E
- Lat 36 43.620S Long 174 47.162E
- Lat 36 43.872S Long 174 47.282E



Not to be used for navigation.

The four corners of the project area will be marked and lit (1 nm yellow lights) by special marks. All mariners are requested to **remain well clear of the area**.

Christiaan Moss
Deputy Harbourmaster
Harbourmasters Office

Vodafone House, 21 Pitt Street
Private Bag 92 012, Auckland
New Zealand
DX CP 28 008 Pitt St
Telephone +64 9 366 2000
Facsimile +64 9 366 2155
www.arc.govt.nz

File Ref

The information contained in this facsimile message is **Confidential Information** intended only for the individual or entity named above. If you are not the intended recipient, you are hereby notified that any use, review, dissemination, distribution or copying of this document is strictly prohibited. If you have received this document in error, please immediately notify us by telephone (call collect to the person and number above) and destroy the original message. **Thank you.**