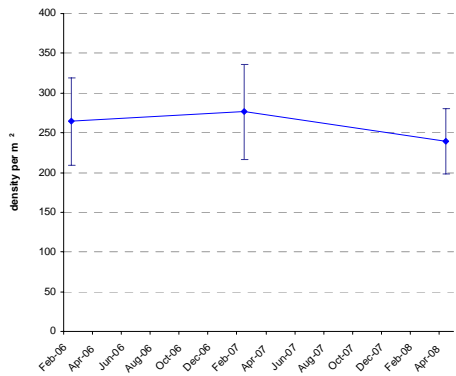
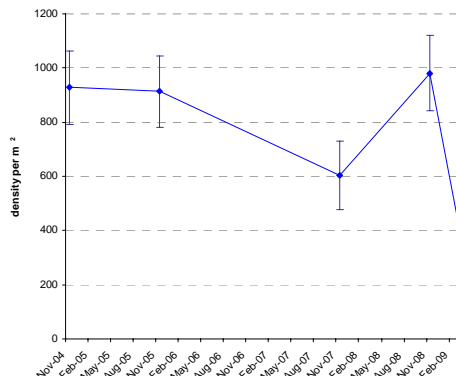


**Shellfish Density Trends - Hauraki Gulf Forum Shellfish Monitoring**

**Whangateau - Causeway**



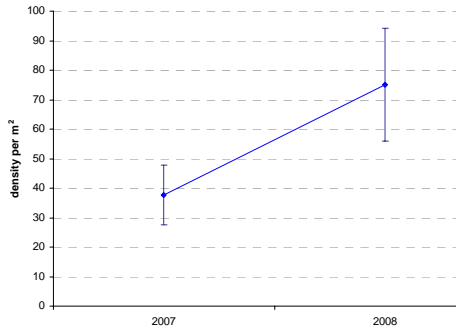
**Whangateau – Lews Bay**



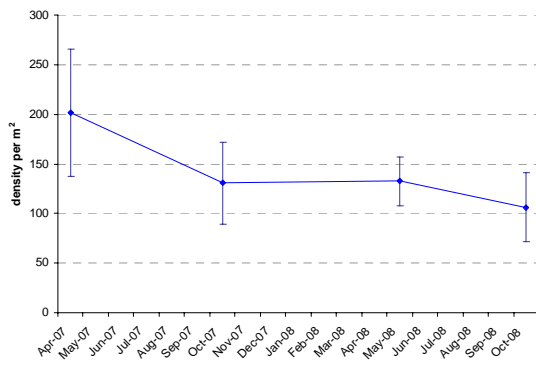
**Ngaio Bay**

173 cockles m<sup>2</sup> se 21

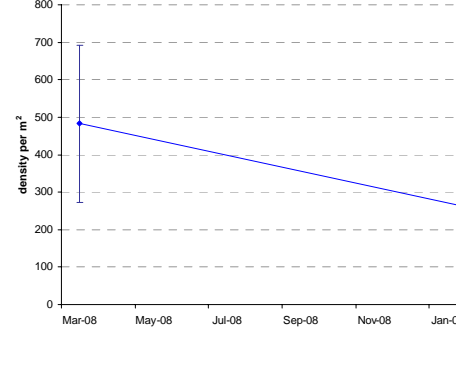
**Okahu Bay**



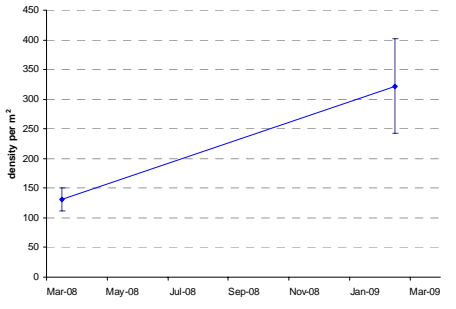
**Cockle Bay**



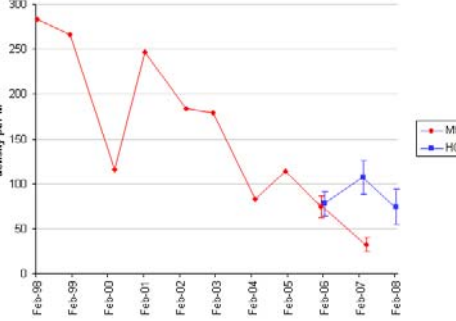
**Beachlands – Motukaraka**



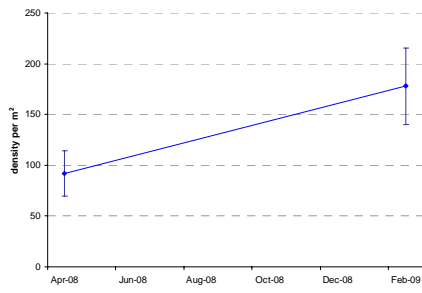
**Beachlands**



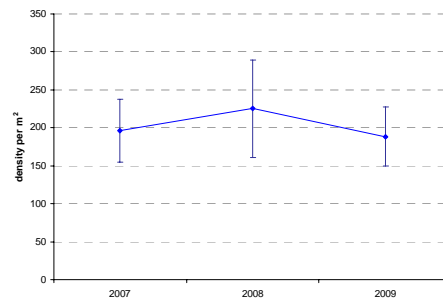
**Umupuia Beach**



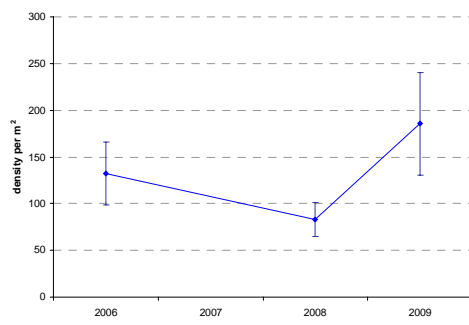
### Duder



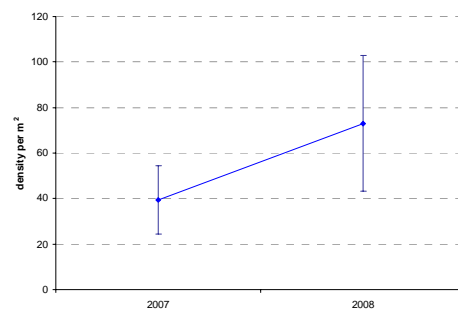
### Kawakawa Bay - West



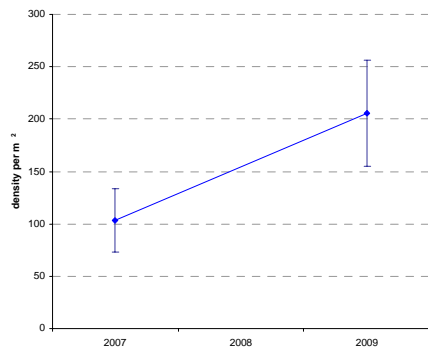
### Kawakawa Bay - East



### Te Matuku Bay



### Whangapoua

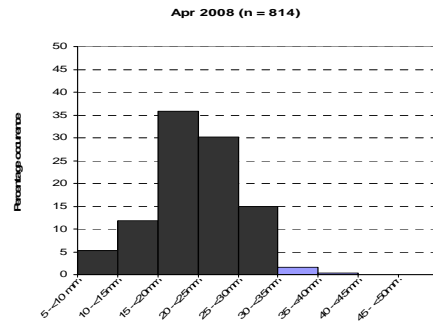
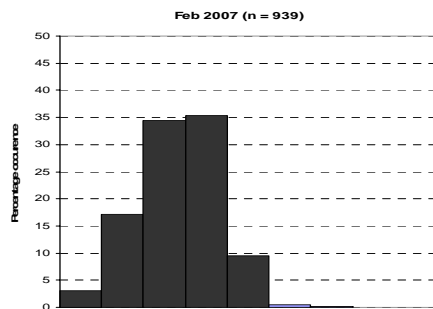
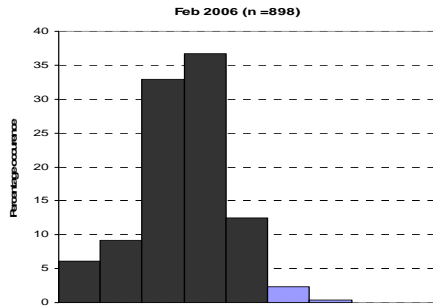


### Whitianga

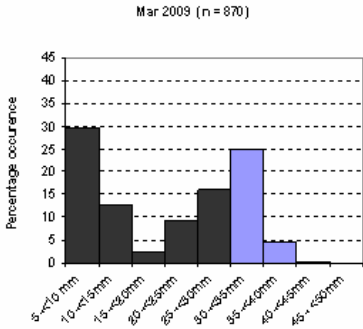
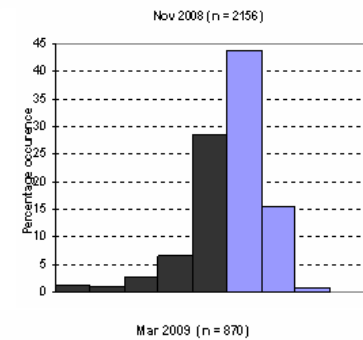
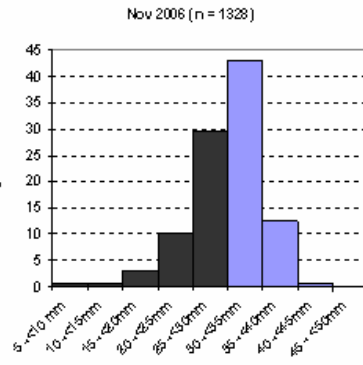
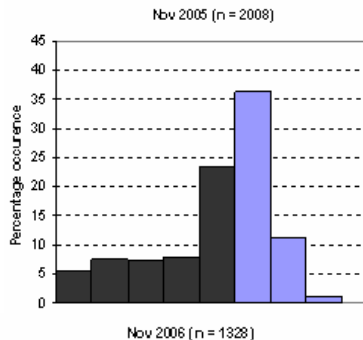
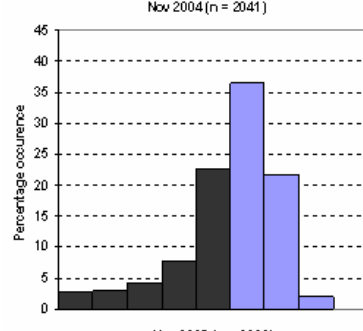
496 cockles per m<sup>2</sup> se 61

# Shellfish Size Length Trends - Hauraki Gulf Forum Shellfish Monitoring

## Whangateau - Causeway

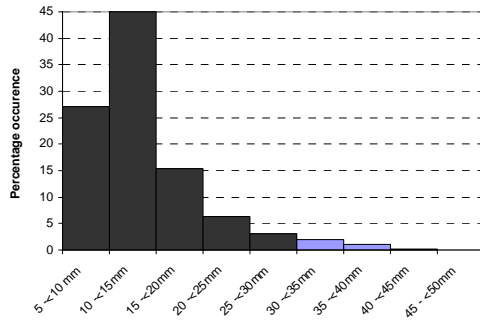


## Whangateau - Lews Bay



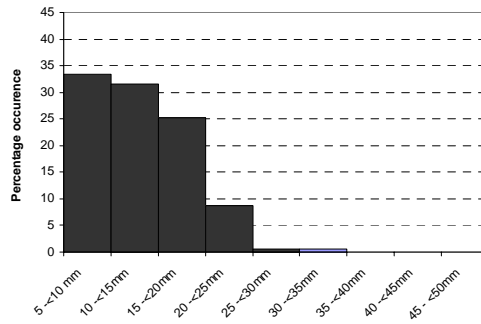
### Ngaio Bay

Apr 09 (n = 1378)



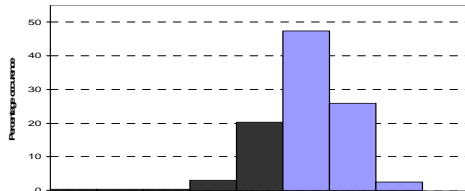
### Okahu Bay

Oct 08 (n = 174)

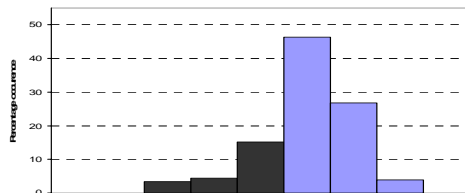


### Cockle Bay

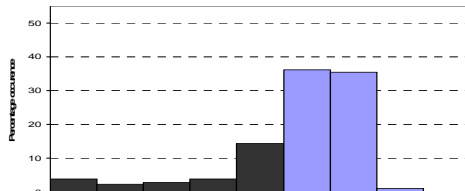
Apr 2007 (n = 627)



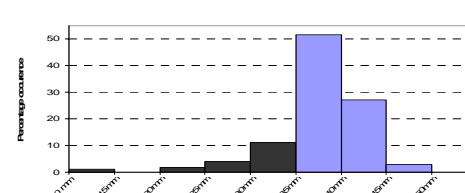
Oct 2007 (n = 179)



May 2008 (n = 180)

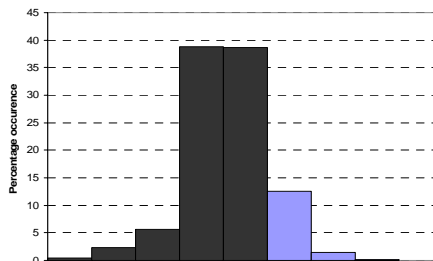


Oct 2008 (n = 170)

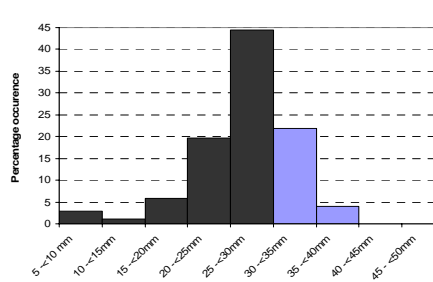


### Beachlands – Motukaraka

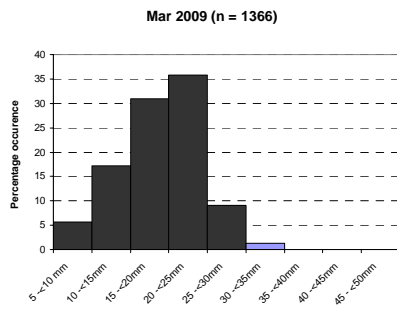
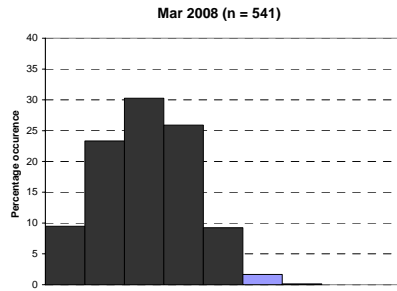
Mar 2008 (n = 531)



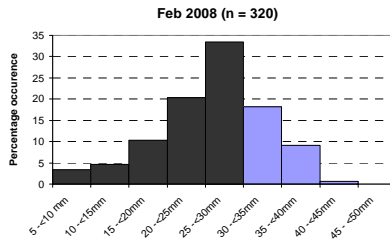
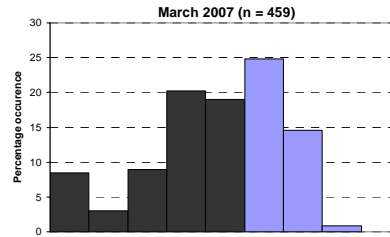
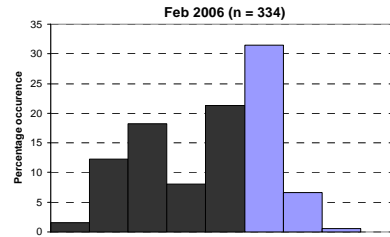
Feb 2009 (n = 274)



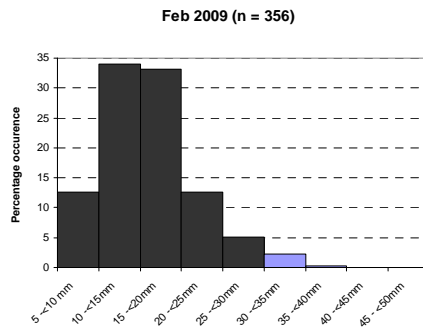
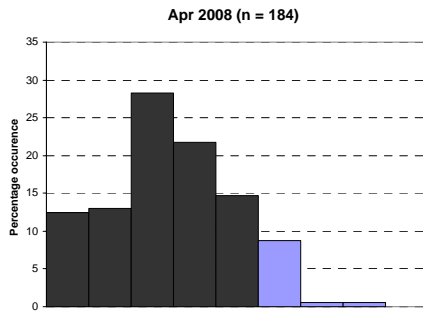
## Beachlands



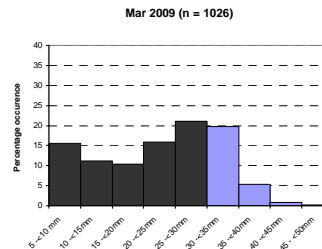
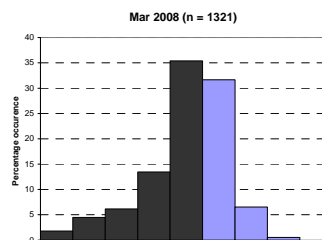
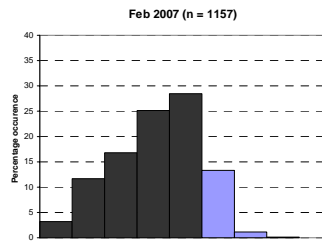
## Umupuia Beach



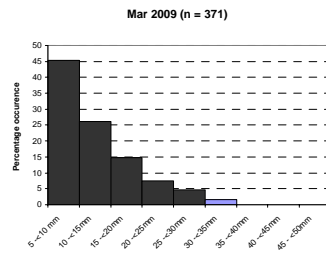
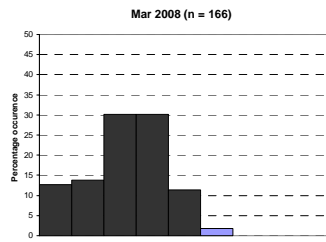
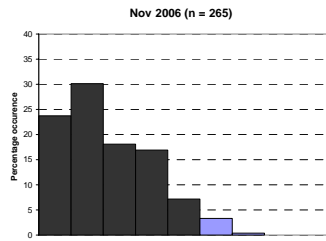
## Duder



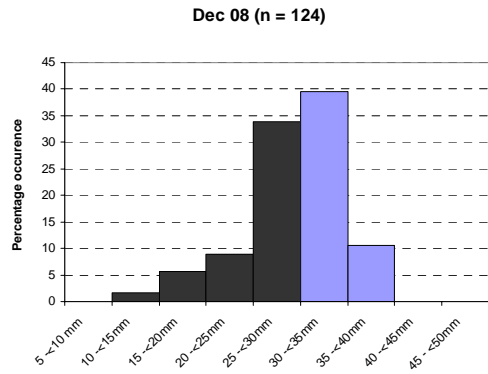
## Kawakawa Bay - West



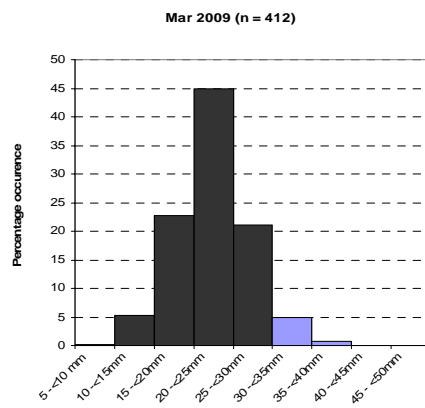
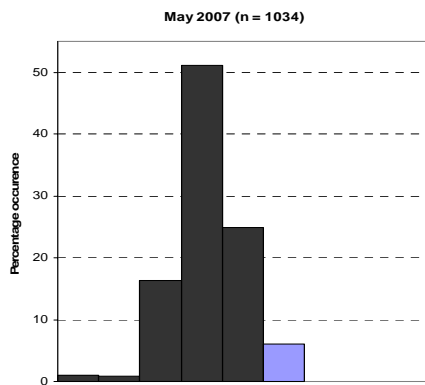
### Kawakawa Bay - East



### Te Matuku Bay



### Whangapoua



### Whitianga

