

# Māori and Integrated Catchment Management

---

Paimārire ki te Atua

Ko te Kaihanga te kaiwhakawā o ngā mea katoa

Ka tukuna ngā wawata me ngā tumanako o tatou tūpuna

Kia tupu ake ai te pono me te aroha hei oranga mō ā rātou uri whakaheke

Ko Ranginui e tū iho nei

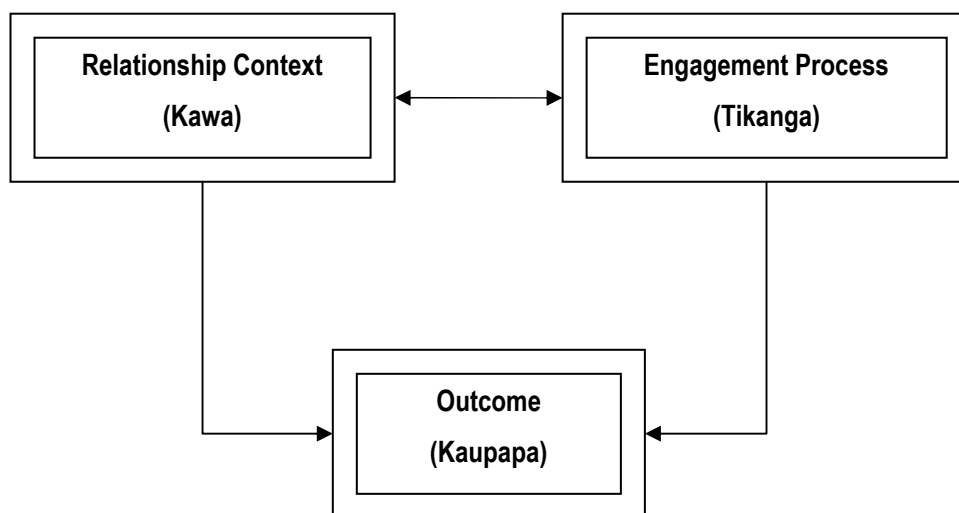
Ko Papatūānuku e takoto nei

Ko Tāmaki Makaurau, Tāmaki Herehere o ngā waka katoa

---

## Introduction

In developing an approach of integrating Māori values and perspectives into ICM plans there are three key elements that need to be considered. The first two contribute to the third,



## Relationship Context (Kawa)

Considering the context in which the ICM approach is developed with Māori is crucial to producing a good outcome and also influence the engagement process, this includes

### Meeting Legislative requirements

Responding to a number of statutes, such as the RMA 1991 or LGA 2002, which set out specific obligations and responsibilities toward Māori?

- The key consideration in an ICM context is the specific legislative requirements to consider or engage with Māori.

### **Effective Treaty-based relationships.**

The Treaty of Waitangi is a key consideration in local authority and Māori community relations as it established a framework for engaging different Māori communities such as tangata whenua and wider Māori residents.

- The key consideration in an ICM context is the relationships between the planning authority, the relevant tangata whenua and wider affected Māori community and the potential implications of existing or future Treaty settlements.

### **Recognising the sustainability needs of Tangata Whenua**

The tangata whenua view of sustainability is anchored in a holistic philosophy, where everything and everyone are inter-connected and therefore need to be valued and cared for with these relationships in mind.

Since the time of creation tangata whenua claim an intimate relationship established by whakapapa, the blood ties to all things in the natural world. Inherent in this relationship are ancestral obligations as Kaitiaki to care for all other parts of the natural world. Over a many generations tangata whenua have developed a highly specialised knowledge and customary practice relating to the environment.

The Auckland Sustainability Framework (ASF) provides a good regional overview of tangata whenua sustainability aspirations. The tangata whenua elements of the ASF are a result of a regional collaboration by iwi. Specific iwi management plans provide an insight into specific iwi aspirations and values for consideration.

- The key consideration in an ICM context is the recognition of the role of tangata whenua in the development of ICMs and in particular;
  1. Tangata whenua relationships with ancestral taonga, their cultural practices and traditions and future development.

*Indigenous value systems need to be recognised and examples of how such values can be expressed, particularly in relation to the use, development and protection of cultural, natural and physical resources.*

2. Effects of sustainability challenges on Mana Whenua relationships with land, water, taonga, culture and traditions and associations with past and present generations.

*Minimising the effects of climate change, global economic change, natural resource use, population growth and demographic change on the sustainability of tangata whenua and their relationships to land and people.*

3. Effects of strategy, policy and plans on tangata whenua Relationships with land, water, taonga, culture and traditions and associations with past and present generations.

*Both beneficial and detrimental effects of different strategies, policies and plans on tangata whenua relationships need to be considered as they are reviewed and developed.*

### **Contributing to Māori Outcomes**

Māori have unique needs and aspirations in relation to their cultural, environmental, social and economic well-being. Māori specific outcomes have been identified and reflected in the Community Outcomes within the ARC LTCCP 2009-2019. (Also a number of other Māori outcomes have been identified in other councils LTCCPs)

- The significant place of tangata whenua is acknowledged and their role as kaitiaki is recognised.
  - Māori participation in the RMA process
  - Give effect to the Treaty of Waitangi in relation to article two
  - The Mauri of water is preserved and stormwater and wastewater are managed better
  - Greater recognition of Tangata Whenua and improved awareness of Māori culture
- Māori are succeeding socially and economically, and contribute to decision-making.
  - Strong economic base for the future of Tamariki
  - Open, inclusive and appropriate consultation with Māori
  - Give effect to the Treaty of Waitangi in relation to article three
  - Recognition of Māori culture and sustainable management
- The key consideration in this context is how Māori needs and aspirations are identified and reflected with ICM and in particular their relationship with a catchment area.

### **Engagement Process (Tikanga)**

In developing an effective engagement process there are a number of key steps/ planning points to consider. How well the engagement process is planned and executed influences the quality of

outcome, in terms of the ongoing relationship between the planning authority and Māori, Māori with a particular catchment and the effectiveness of an ICM Plan. Some of the planning points include;

### **Scope of Māori Engagement**

The scope of Māori engagement within a specific catchment area will need to be considered. This includes the identification of targeted audience(s) such as tangata whenua and Māori residents, the historical and contemporary context.

### **Building and Maintaining Long-term Relationships**

Consideration of how relationships will benefit in the long-term by developing and building trust within communities, understanding both organisation and community processes, identifying shared outcomes, identifying issues, interests and timeframes.

### **Identify Capacity/ Capability Needs**

Identifying the capability and capacity needs of both Māori and the organisation in order for; Māori to effectively contribute and participate in the process both at a planning, implementation and monitoring level and for the organisation to understand, respond and integrate the Māori contribution to the process. The key consideration is how will the planning authority contribute or respond to these needs.

### **Māori Contribution to decision-making**

Relevant pathways, mechanisms and/ or instruments will need to be considered in order to ensure effective contribution of Māori to decision-making.

These may include

- Statutory or non-statutory planning processes,
- Consent, planning or monitoring protocols,
- Mechanisms such as joint working parties, iwi forums or standing committees, and
- Instruments such as relationship agreements, contracts of service
- Iwi management plans.

### **Outcome (Kaupapa)**

In developing an effective ICM outcome, there are specific Māori issues/ outcomes that will need to be considered, along side the what is hoped to be achieved in the broader outcome relationships identified in the relationship context and also the process centred outcomes relating to Māori engagement. Some generic issues/ relative to ICM include;

- Understanding and integrating Māori worldviews into ICM plans
- Preventing, managing or mitigating loss or damage to the Mauri of water/ whenua

- Cultural Heritage (protection, practice, loss, modification or damage)
- Sustainable resource use (management, allocation)
- Contaminated Sites (minimising affects, restoration)
- Sedimentation/ Sediment Pollution
- Coastal Marine Environment (contamination, integrated management – Catchment Plans vs. Coastal Compartment Plans)
- Biodiversity issues (decreasing indigenous biodiversity, decreasing taonga species)
- Biosecurity (threats to biodiversity)
- Kaitiakitanga (management, monitoring, protection, cultural practices, economic development)

Within a broader ICM approach some key Māori outcomes are as follows;

**Mana Whakahaere** - Effective Leadership and Decision Making

Acknowledging the importance of effective leadership and decision making for Māori communities by;

- Strengthening governance relationships
- Facilitating management and operational relationships
- Developing effective means of Māori communities to contribute to Council decision making

**Turangawaewae** – Sense of place

Acknowledging the Auckland Region as the home to many people, and recognising the fundamental place of tangata whenua as the indigenous occupants of the region and also the choice of Māori from other parts of New Zealand to live here by;

- Increasing the visibility/ awareness of the presence of tangata whenua for the region
- Contributing to the capacity of tangata whenua marae
- Supporting the retention and utilisation of Māori land by Māori within the region

**Whanaungatanga** – Strengthening relationships

Acknowledging the value and importance of effective working relationships for and with Māori communities

- Collaborating with other agencies to work more effectively with Māori communities
- Partnering with other Regional and Territorial Authorities to work more effectively and efficiently with Māori communities
- Partnering with Rohe (Regional) Iwi Authorities to work more effectively with Takiwa (Local) Iwi Authorities.

**Taonga Tuku Iho** – Treasures handed on

Acknowledging the cultural, knowledge and intellectual capital that has been inherited, created and to be handed on to future generations, as well as the potential for realising the social and economic capital of Māori.

- Contributing to the care and protection of tangata whenua cultural heritage values and practices
- Supporting the development of Māori social and economic potential

**Te Ao Turoa** – Interaction with the Natural World

Acknowledging the world and society, progress and change and how people best interact with the natural world in a sustainable manner.

- Contributing to the sustainability of tangata whenua and their needs and aspirations
- Managing the impact of regional growth on tangata whenua, their traditions, ways of life and relationships with the natural world

## Further Reading Material

- Auckland Regional Policy Statement, Chapter 3
- Proposed Auckland Regional Plan: Air, Land and Water, Chapter 2.3
- Manukau District Plan, Chapter 3a
- Waitakere District Plan, Chapter 4
- Franklin District Plan, Part 4
- Auckland District Plan, Central Area Section, Isthmus Section, Hauraki Gulf Islands Section
- North Shore District Plan, Section 7
- Papakura District Plan, Section 1, Part 3
- Rodney District Plan,
  
- Harmsworth' G, The Role of Māori Values in Low-impact Urban Design and Development
- Harmsworth, G, Collaborative Research with Māori groups as part of the Motueka integrated catchment programme
- Waitakere City – Comprehensive Urban Stormwater Management Strategy & Action Plan
- MfE, Using the Cultural Health Index: How to assess the health of streams & waterways
- MfE, Sustainable Water Programme of Action

For further discussion please contact

### **Johnnie Freeland**

Pae Arahi

Te Pae Hononga Māori - Māori Relations

Te Rauhitanga Taiao

Auckland Regional Council

T+ 64 9 366 2000 x8098

F+ 64 9 366 2155

C+ 64 0276 969 424

E+ [john.freeland@arc.govt.nz](mailto:john.freeland@arc.govt.nz)

W+ [www.arc.govt.nz](http://www.arc.govt.nz)