



Other information

This section overviews the political and management structures for the Auckland Regional Council.

Chapter 6 > Other information 158

ARC political structure	160
ARC organisation structure	162
ARC management team	163
Glossary and abbreviations	164
Contact details	166





ARC political structure

The Local Government Act 2002 (the Act) establishes the role of the ARC as being to give effect to the purposes of local government. These purposes are to enable democratic local decision-making and action by and on behalf of communities; and to promote the social, economic, environmental and cultural well-being of communities, in the present and for the future. The ARC is therefore accountable to the region's ratepayers (whom it consults on a wide range of plans and policies), and to Parliament.

The Council, in performing its responsibilities, must act in accordance with the principles established in the Act, and within its wider legislative framework.

Key legislation enabling the Council to perform its functions includes the:

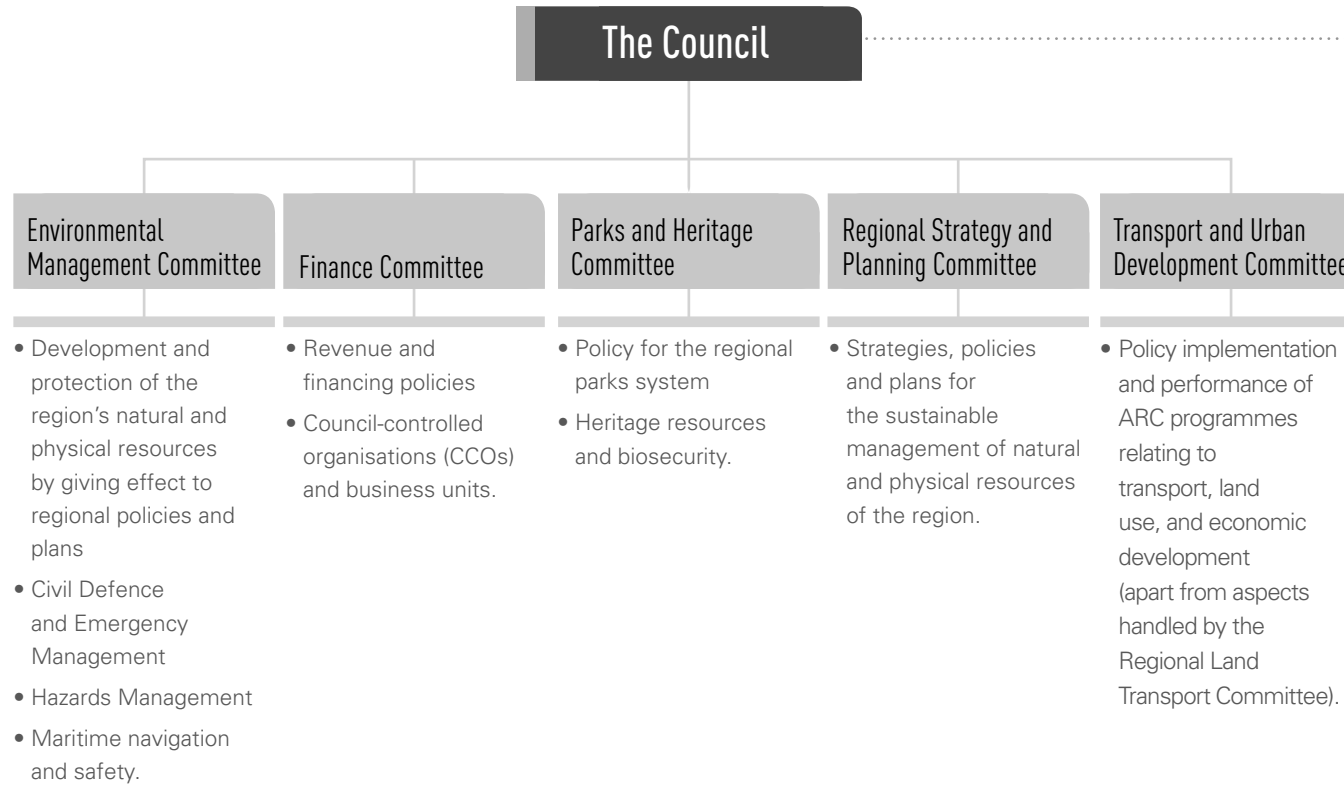
- Local Government Act 2002
- Resource Management Act 1991
- Biosecurity Act 1993
- Civil Defence Emergency Management Act 2002
- Transit New Zealand Act 1989
- Land Transport Management Act 2003
- Transport Services Licensing Act 1989
- Reserves Act 1977
- Hazardous Substances and New Organisms Act 1996
- Hauraki Gulf Maritime Park Act 2000.

Council

Elections for the 13 ARC members are held every three years. The next election will be held in October 2010.

Standing committees

All councillors are members of five standing committees, which are scheduled to meet monthly. The standing committees are: Environmental Management, Parks and Heritage, Finance, Regional Strategy and Planning, and Transport and Urban Development. Each committee has delegated powers, functions and duties, with roles as set out below. Other committees and sub-committees generally have a review or recommending role.



Other ARC committees

CEO Review committee

- Manages the chief executive’s contract.

Regional committees

- Established in terms of specific legislation. Generally comprises at least one ARC councillor, an elected representative from each city and district council in the region, and other government, local government and statutory representatives.
- Includes the Auckland Regional Civil Defence Emergency Management Group, Auckland Regional Sustainable Development Forum, Hauraki Gulf Forum, Auckland Regional Land Transport Committee and the Auckland Regional Economic Development Forum.

ARC organisation structure

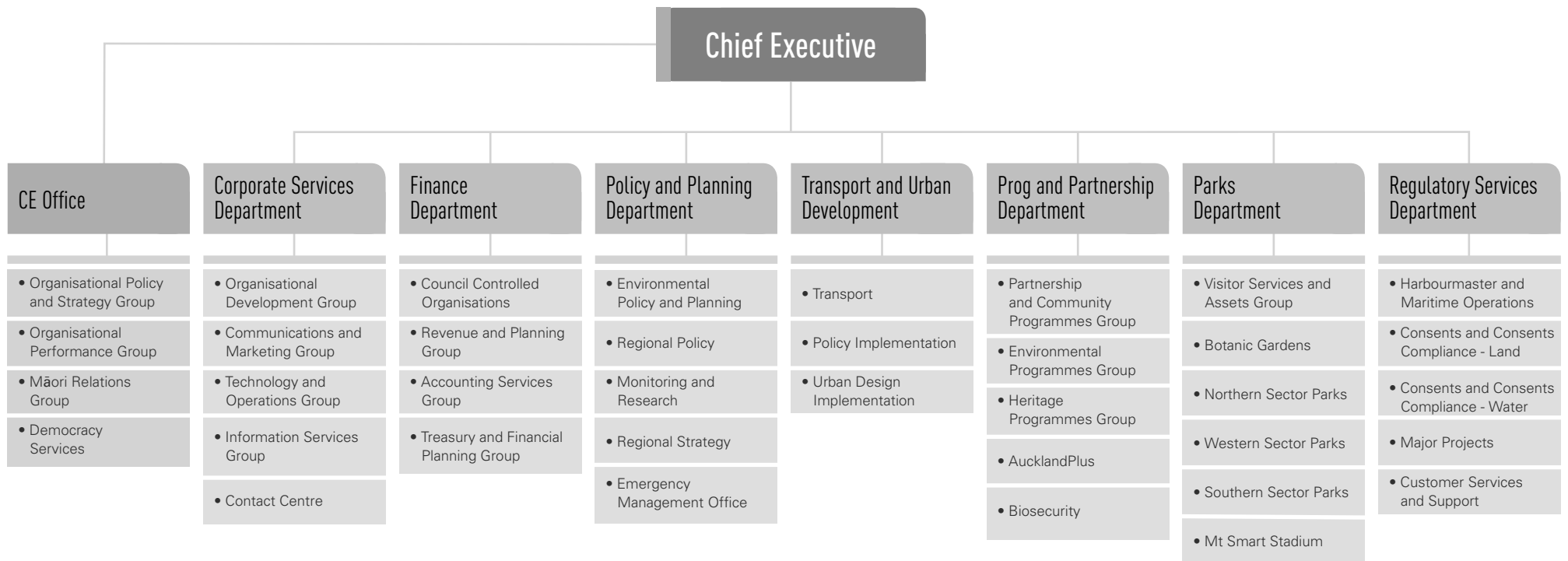
The role of ARC staff is to support Council decision-making and implement policy decisions.

The organisation has eight departments:

- Chief Executive's office
- Corporate Services
- Finance
- Parks
- Transport and Urban Development

- Policy and Planning
- Programmes and Partnerships
- Regulatory Services

Each department is headed by a general manager and is made up of groups that deliver on the activities that the department is responsible for. The following diagram provides more detail on how each department is organised.



ARC management team

1 > Peter Winder

Chief Executive

The Chief Executive is responsible to the Council for implementing Council decisions, advising the Council, performance of powers and duties delegated to him or other employees, management of the Council's operations, maintaining systems that enable effective planning and reporting, and providing leadership for, and employing staff on behalf of, the Council.

2 > [Position to be filled]

Executive Manager, Chief Executive's Office

Māori Relations
Organisational Policy and Strategy
Organisational Performance
Democracy Services
Executive Support

3 > Janine Bell

General Manager Regulatory Services

Harbourmaster and Maritime Operations
Consents and Consents Compliance - Land
Consents and Consents Compliance - Water
Major Projects
Customer Services and Support

4 > Lance Vervoort

General Manager Parks

Visitor Services and Assets
Botanic Gardens
Southern Parks
Northern Parks
Western Parks
Mt Smart Stadium

5 > Wendy Bussen

General Manager Corporate Services

Technology and Operations
Information Services
Organisational Development
Contact Centre
Communications and Marketing

6 > Brian Monk

General Manager Finance

Council-Controlled Organisations
Rates
Corporate Planning and Reporting
Accounting Services
Treasury and Financial Planning

7 > Louise Mason

General Manager Programmes and Partnerships

Partnerships and Community Programmes
Environmental Programmes
Heritage Programmes
Economic Development
Biosecurity

8 > Lesley Baddon

General Manager Policy and Planning

Environmental Policy and Planning
Regional Policy
Monitoring and Research
Regional Strategy
Emergency Management Office

9 > John Smith

General Manager Transport and Urban Development

Transport
Policy Implementation
Urban Development Implementation

Glossary and abbreviations

	Description
“Department”	Term used to describe the major management units of the organisation- for example Regulatory Services, Finance etc. Led by General Managers.
“Group”	Term used to describe the major divisions within Departments- for example Biosecurity, CCO Monitoring, Consents and Consent Compliance. Headed by Group Managers
A+	AucklandPlus, the Economic Development Business Unit of the ARC
ACC	Auckland City Council/Auckland City
Activity	These are the groups of projects which together contribute to achieving our community outcomes. They are measured through Key Performance Indicators [KPIs] to ensure that we are achieving them.
AP	Annual Plan or Accounts Payable
AR	Annual Report or Accounts Receivable
ARC	Auckland Regional Council
AREDS	Auckland Regional Economic Development Strategy
ARGS	Auckland Regional Growth Strategy
ARH	Auckland Regional Holdings
ARLTS	Auckland Regional Land Transport Strategy

	Description
ARPS	Auckland Regional Policy Statement
ARTA	Auckland Regional Transport Authority
ARTNL	Auckland Regional Transport Network Ltd
ASF	Auckland Sustainability Framework
BCP	Business Continuity Plan
BCU	The Big Clean Up
BG	Botanic Gardens
Capex	Capital Expenditure
CCO	Council-Controlled Organisation
CCP	Communities for Climate Change (programme)
CDEMG	Civil Defence Emergency Management
CEO	Chief Executive (Officer)
Community outcome	These are the statements that describe what you aspire to and have told us we should aim for as a region, such as “Quality built environment”.
Council or ARC	The Auckland Regional Council
DoC	Department of Conservation
EAS	Environmental Awareness Survey
EIF	Environmental Initiatives Fund
EOC	Emergency Operations Centre

	Description
FDC	Franklin District Council
Financial year	Information reported as 2008, 2009, 2010 etc refers to the 12 months ending 30 June in the year stated.
GEUDO	Government Environment, Urban Affairs and Development Office
Groups of Activities	These are the ARC’s groups of activities that focus on the Council’s key deliverables. Each group comprises a number of LTCCP programmes.
IA	Infrastructure Auckland (dis-established 2004)
IT	Information Technology
KPI	Key Performance Indicator
LGA	Local Government Act 2002
LGAAA	Local Government (Auckland) Amendment Act 2004
LGOIMA	Local Government Official Information and Meetings Act 1987
Long-Term Council Community Plan (LTCCP)	Your Region, Your Future, the ARC’s strategy for the region, developed in consultation with the community, covering the 2006-16 period. The LTCCP is prepared every three years. An annual plan is prepared on the in-between years.

	Description
Long-Term Financial Strategy	References are to the financial strategy, covering the 2006-16 period. It reflects the funding and expenditure for this 10-year period, as projected against the community outcomes and activities.
LTCCP	Long-Term Council Community Plan
LTCCP activities	These are groupings of programmes and other activities that contribute to ARC's key deliverables. Many of these reflect the community outcomes.
LTFS	Long -Term Financial Strategy
MCC	Manukau City Council
MfE	Ministry for the Environment
MoU	Memorandum of Understanding
MUL	Metropolitan Urban Limit (part of Regional Growth Strategy framework)
NSCC	North Shore City Council
Opex	Operating Expenditure
PDC	Papakura District Council
Plan 2008	Plan 2008 refers to the Projection for Financial Year 2007/08.
POAL	Ports of Auckland Limited (100% equity owned by ARH)
Project	Detailed work area that contributes to an LTCCP programme or activity.

	Description
PT	Passenger transport
PTRA	Passenger Transport Rateable Area
RDC	Rodney District Council
RMA	Resource Management Act
RP:C	Regional Plan: Coastal
RWC 2011	Rugby World Cup 2011
SOE	State of the Environment (Report)
SOI	Statement of Intent
SOP	Statement of Proposal (required by Local Government Act)
TA/ TLA	Territorial Authority, Territorial Local Authority
WCC	Waitakere City Council
Year	Information reported as 2006, 2007, 2008 etc refers to the 12 months ending June 30 in the year stated.





Contact Details

General enquiries

Address	21 Pitt Street Private Bag 92-012 Auckland 1142
Phone	09 366 2000, press 1
Outside the Auckland toll-free area	0800 80 60 40
Facsimile	09 366 2155
Email	info@arc.govt.nz
ARC website	www.arc.govt.nz
Office Hours	Monday to Friday, 8am – 5pm

Regional rates enquiries

Phone	09 366 2000, press 3
Email	rates@arc.govt.nz

After hours/Emergency

24-Hour Air Pollution Hotline	09 366 2000
24-Hour Water Pollution Hotline	09 377 3107
Moorings and Harbour Safety Patrol	09 362 0397
Regional Parks	09 366 2000

Mt Smart Stadium

Phone	09 571 1603
Facsimile	09 571 1681
Events line	09 571 1699
Website	www.mtsmartstadium.co.nz

Auckland Plus

Phone	09 366 2074
Website	www.aucklandplus.com

Botanic Gardens

Phone	09 267 1457
Website	www.aucklandbotanicgardens.co.nz

Auckland Regional Transport Authority (ARTA)

Phone	09 379 4422
Website	www.arta.co.nz

Auckland Regional Holdings (ARH)

Phone	09 303 9460
Website	www.arh.co.nz

MAXX

For bus, train and ferry timetable information in the Auckland metropolitan calling area. Telephone 7am–8pm Monday to Saturday, 8am–6.30pm Sunday and public holidays. Closed Christmas Day.

Telephone	09 366 6400
Website	www.maxx.co.nz
Text Messaging	3666
Email	maxxenquiry@maxx.co.nz
Outside Auckland toll-free area	0800 10 30 80