

Joins Map 22

Proposed Auckland Regional Plan: Air, Land and Water
 Proposed Variation 5 and 6: Extension to the Urban Air Quality Management Area (UAQMA).

--- Proposed Metropolitan Urban Limits extension (see Proposed Private Change 15 and 16 to the ARPS)

▨ Proposed Urban Air Quality Management Area Extension

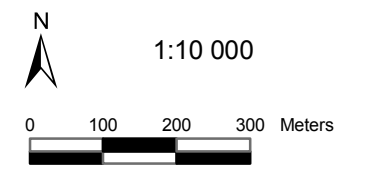
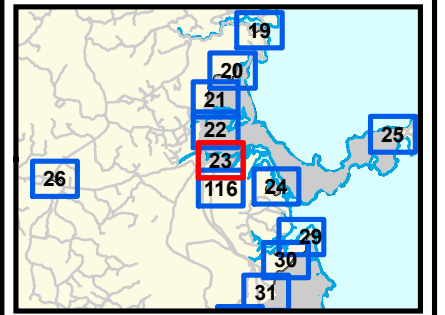
Proposed Variation 5
 Hibiscus Coast Gateway

Proposed Variation 6
 Silverdale Industrial

Map Series 1A:
Proposed Variation 5 and 6
to the Proposed Auckland
Regional Plan:
Air, Land & Water
Map 23
Silverdale
Rodney

LEGEND

- Land Parcel Boundary
- River or Stream
(Derived from NZMS260 Topographical Maps)
 Lines are indicative only of permanent rivers or streams, but may include water courses which are intermittent streams, or which are artificially created. In all cases, determination of whether a river or stream is a permanent river or stream, shall be made with reference to the definition of "Permanent River or Stream" in Chapter 12: Definitions.
- Road
- Railway Line
- Rail Station
- Lakes, Dams and Ponds
- Industrial Air Quality Management Areas
- Urban Air Quality Management Areas
- Rural Air Quality Management Areas



This Document is Not to be Reproduced or Replicated in Any Way

Digital Cadastral Database, LINZ
 Crown Copyright Reserved

Produced by ARC GIS Unit with data supplied by SKM, as amended by consent order June 2008 and RMA Clause 16 changes October 2008

